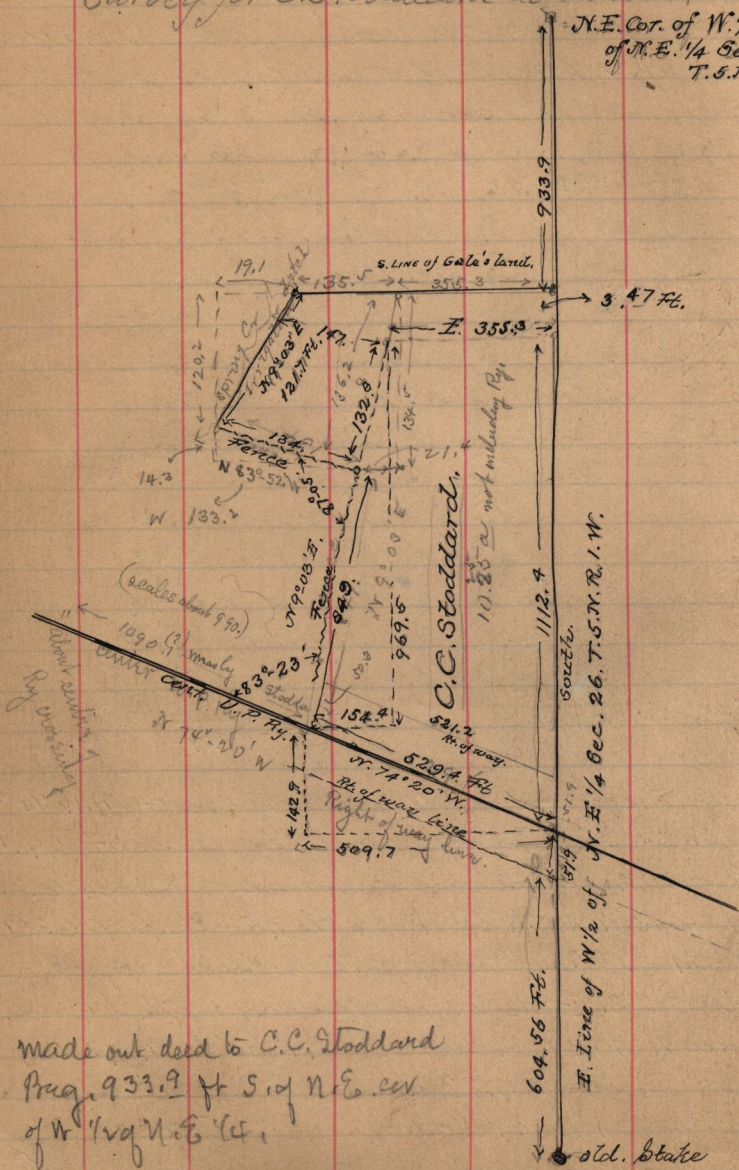


- Dec. 30 - 1892 -

Survey for C.C. Stoddard at Winston,

N.E. Cor. of W. 1/2
of N.E. 1/4 Sec. 26,
T. 5. N. R. 1.



made out deed to C.C. Stoddard
Aug. 933.9 ft S. of N.E. cor
of W 1/2 of N.E. 1/4

F. Fence of W 1/2 of N.E. 1/4 Sec. 26, T. 5. N. R. 1. W.

old. State